

Prayer for Wholesomeness

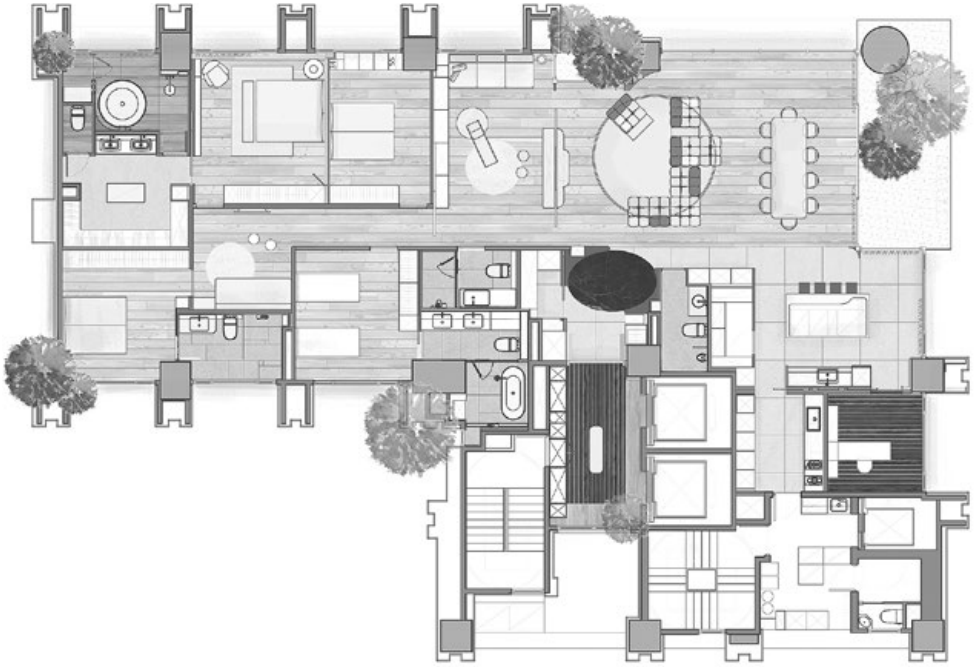
圓滿祈願

設 計 者」近境制作 / 唐忠漢
攝 影 者」崧米罇空間攝影
空間性質」住宅
坐落位置」台灣
主要材料」礦物塗料、超耐磨木地板、磁磚、帝雉石、大理石、木皮、系統板、鐵件、長虹玻璃
面 積」98 坪

Designers」Design Apartment / Tang Chung Han
Photographer」Weimax Studio
Category」Residence
Location」Taiwan
Materials」Special paint, marble stone, ceramic tile, wood flooring, metal, wood veneer, glass
Size」323.9m²



以圓弧線條柔軟圍塑居家環境，收拾生活機能瑣碎，明淨親子互動畫面。



身處都市忙碌的生活步調中，回到家中就能卸除環境紛擾，在純淨美好的私宅裡，享受珍貴的親子時光，為孩子的成長歲月留下歡笑，是父母共同的期望。這座家居是養育兩對雙胞胎的六口之家，住宅空間如何平衡不同年齡層與成長階段的需求，是情感和智慧的雙重挑戰，設計師以淨朗的空間迎入燦爛陽光、打亮凝聚家庭成員的互動場景，為屋主一家預設了美好藍圖，在弧線圍塑的筆法中，勾勒出居家生活的溫馨日常。

弧形勾勒團圓意象

為了深刻內外轉換的儀式感，空間以深色調鋪陳的梯廳為始，藉沉靜氛圍領人轉換情緒。動線進入內玄關，整體設色由暗轉亮，迎來陡然開闊的視覺感，玄關兩側弧牆宛如一雙微微向內合攏的手掌，迎承居住者的歸來，地坪的圓形大理石如深潭般反射月圓般的天花造型，以團圓意象傳達歡迎之意。

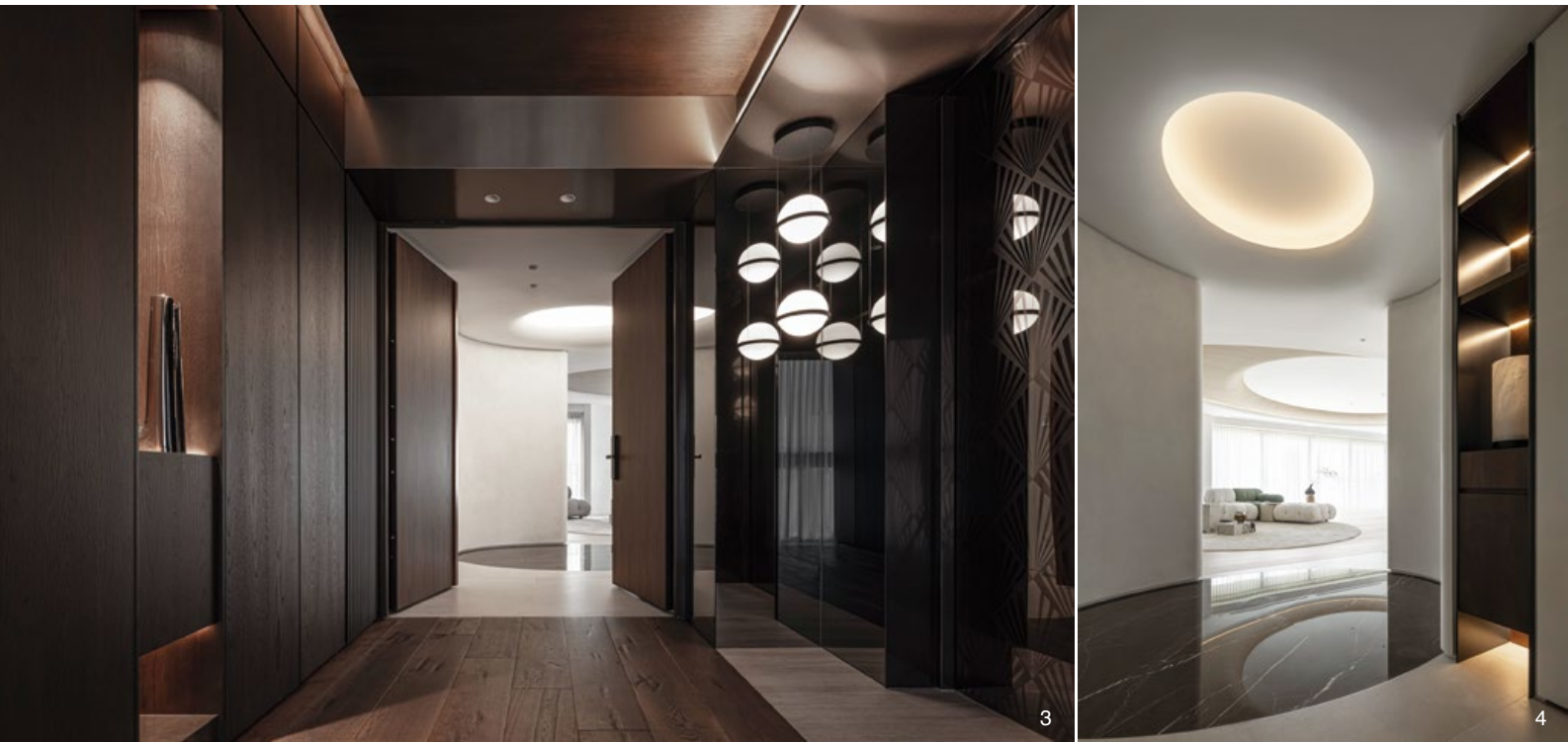
Tang Chung Han



近境制作 / 唐忠漢
遠域生活 (深圳) 設計有限公司、近境制作設計有限公司 設計總監
安邸 AD100 中國最具影響力 100 位設計精英、美國 INTERIOR DESIGN 名人堂入選成員、義大利 A' Design 鉅金獎得主
北京清華大學軟裝研修班講師
深圳市創想公益基金會專家顧問
近境的設計源自於對生活的熱情，強調自然、清晰的原始設計，象徵年輕與活力，代表未來空間的發展方向，認為最好的設計便是創造未來。作品曾獲 Andrew Martin 國際室內設計大獎、CREDAWARD 地產設計大獎、FARME 設計大獎、IPA 國際地產大獎、TITAN 地產大獎、TID 室內設計獎肯定。

Design Apartment / Tang Chung Han, Chief of Design
AD100 named Tang as one of the 100 most influential design elites in China
Member of the INTERIOR DESIGN Hall of Fame in the United States. A' Design golden award winner Lecturer, Interior Design Training Course, Tsinghua University, Beijing Professional consultant of Shenzhen Chuanxiang Charity Foundation
Design Apartment originated from an Asian passion for life, emphasizing natural, clear and authentic design, symbolizing youth and vitality, and representing the developmental direction of future space.
Tang's works have been recognized by the Andrew Martin International Interior Design Award, CREDAWARD Real Estate Design Award, FARME Design Award, IPA International Real Estate Award, TITAN Real Estate Award, and TID Interior Design Award.

1. 在弧線圍塑的筆法中，勾勒出居家生活的溫馨日常。
2. 平面圖。



點亮空間的精緻細節

全作選材重視質感與自然氣息，以淺色為底襯搭配木紋鋪陳，烘托溫暖明朗的生活感，同時襯托室內的光影變化。設計師運用建築的深凹窗特色引入充足光照，為避免陽光直射刺眼不適，公共區域以淺色礦物塗料覆蓋牆面，配合空間內部的氣流暢通，調節室內舒適的微氣候與光感受。此外，簡約大方的空間輪廓裡，並用木紋、石紋的質感反差與紋理搭配，令居家空間流露耐人尋味的精緻質感。

因應空間的採光條件，公共區域的拉門材料均採用長虹玻璃，讓全景落地窗與陽台延續採光優勢，也以適度的遮蔽效果維繫家居隱私。在細節上，長虹玻璃的紋理、電視牆面的波紋，以及廚房吧檯的桌腳均呈現豎紋線條，紛紛與窗簾的皺褶紋理遙相對話。

餐桌的桌腳造型與 Apparatus Studio cloud 吊燈相互呼應，雲朵般的曲線在餐廳裡書寫童趣和自由，中島斑駁的大理石花紋和香檳金邊的投射燈，在白色基調的背景中妝點華美的裝飾效果，白日星是別致的用餐空間，入夜當孩子就寢後，在燈光映照中轉變華麗氛圍，可作為夫妻對飲微醺的休閒空間。採訪」江瑜

3. 梯廳以深色木質調搭配少許金屬和情境照明，緩和出入情緒，為進入室內環境做身心鋪墊。4. 玄關兩側的弧牆解決入室即見陽台門，穿堂煞的風水問題。5. 客餐廳的弧形天花板木紋部分初時採用貼木皮，後在業主的建議下改用裝飾軟片，在突出立體的弧度同時，保留木紋的優美。
3. The entry hallway with dark tone wood finish is paired with decorative metal accessories to ease the emotions, prepares the body, and mind for entering the indoor setting. 4. The curved walls flanking the entrance resolve the Feng-Shui problem of balcony doors directly visible when entering the room. 5. The wood curved ceiling in the living room highlights the three-dimensional curvature while retaining the beauty of the wood grain.

客廳右側，於電視牆兩邊分設兩道玻璃拉門，門後是屋主全家的私領域；左側則與開放式餐廳、廚房相接，環形動線串聯公共空間不同場域，配合綿延不斷的落地窗，建構整體明亮感受。

客廳延續圓弧語彙，布下雙層圓頂創造有如漣漪的視覺層次，地坪用材的反差為廳區創造了舞台之感，正是家人共聚的主要空間。圓形天花周邊由數段弧牆修飾了建築結構的稜角，牆體線條與落地窗相連結，弧線令不同建材之間連而不斷，也反射了落地窗投入的採光，加深空間明亮氣息。採用壁爐作為主牆造型，在溫暖搖曳的火光背景下，增進「家」的溫暖氛圍。

面面俱到的機能規劃

考量屋主日常生活、親子互動、私宅宴客等不同需求，廳區重視開闊無界的寬敞感受，客廳內採用 B & B Camaleonda 沙發，其造型有如建築幾何元素、90×90 公分正方形座椅模塊，能與空間的圓弧語彙互構平衡，無銳角椅身確保了孩童活動安全，應用上也能自由挪動和重新組合，體貼當下情境所需，為客廳堆砌出新的場域重心，並透過不同的組合趣味，改變廳區畫面。

因應成長期家庭，家中成員生活裡新增、積累各種日常用品，這座家居預留了充分的儲藏規劃與儲物空間，像是玄關旁的儲藏室、餐廳旁的備品室，或是客廳大容量收納櫃牆，都能將雜物、備品收隱於其中，維繫舒朗明淨的居室畫面。

坐落於轉角處的廚房，設下玻璃拉門隔絕輕食中島區與中餐熱炒區，避免烹飪油煙干擾到其他區域進行的活動。中式廚房連結至裡部的工作間，將家務動線做了俐落整合，提升日常打理的效率。

設計師運用一道滑軌門片分界了公私領域，私領域內部除了臥房的個室規劃，也十分重視凝聚家人情感，以起居廳／遊戲廳作為私領域共聚的核心，讓親子能在此一起閒聊、共讀，或是在夜深人靜之時，作為獨處或夫妻閒談的小角落。





6

6. 整體色調素淨，通過建材質感豐富畫面表情，植物和石材在乳白和淺褐的背景中形成少許色彩點綴，添加自然的清新。7. 客廳壁爐弧形牆面作為家人圍聚的中心，同時呼應天花板的弧形線條，減少尖銳的直角，打造親子友善的空間。

6. The overall plain tone was used with a rich finish material textures strategy to enhance the expression of the design. Plants and natural stones embellish the milky white background, adding natural freshness. 7. The curved wall of the fireplace in the living room serves as core where the family gathers. It also echoes the curved lines of the ceiling and reduces sharp right angles to create a parent-child friendly space.

Living within the busy pace of life in the city, it is the common expectation of parents to be able to escape the turmoil of the environment when they return home, so they can enjoy precious parent-child time in a pure and beautiful private dwelling. This home is design for a family of six, a couple raising two sets of twins. How to balance the needs of different age groups and growth stages is a dual challenge both emotionally and intellectually. The designer used a clear open space to welcome the bright sunshine and highlight the interactive scenes that unite family members. In the arc-shaped brushwork, he outlined the warm daily life of home.

Arc outlines the character of gathering

In order to deepen the ritual sense of transition between inside and outside, the space begins from the stair hallway finished in dark colors, using a calm atmosphere to lead people to change their emotions. Upon entering the inner vestibule, the overall color scheme changes from dark to bright, ushering in a suddenly open visual sense. The curved walls on both sides of the vestibule are like a pair of palms that are slightly closed inward, as if to welcome the return of the residents. The round shape marble flooring reflects the full moon-like ceiling shape, conveying a sense of welcome

with the image of reunion. The circular circulation line connects different areas of the public space, and the coordination is continuous. Floor-to-ceiling windows create an overall bright feeling.

The living room continues the arc vocabulary, with a double-layer dome ceiling creating a ripple-like visual hierarchy. The contrast of the floor materials creates a stage-like living area, which is the main space for family gatherings. The curved lines connect different materials continuously, and also reflect the light penetrating into the space through the full height window openings, deepening the bright atmosphere of the space. The fireplace is the feature wall of the space with the warm and swaying firelight as the background, enhancing the warm atmosphere of "home."



7



8



9



10

建材分析 Material Analysis

1. 公共區域牆面以淺色系的礦物塗料為主，善用建築本身的採光優勢，透過不同的環境光線和角度對色彩和質地產生不同的感受，讓看似樸實無華的牆面，呈現不同表情。2. 使用長虹玻璃作為公共區域拉門材料，讓大面寬的全景落地窗與透明玻璃陽台的光線可以延續採光的穿透性。3. 利用木紋裝飾軟片，在 3D 弧形天花板造型柔軟展現木質紋理。

1. The walls in the public areas are finished with light-colored mineral paint, making good use of the lighting advantage. Different ambient light angles produce different feelings about the color and texture, making the seemingly plain and modest walls glow in various expressions. 2. Use of patterned glass as the sliding door material in public areas allows the light from the large panoramic full height openings to facilitate the penetration of natural lighting. 3. Wood grain decorative film softly displays the wood grain in the sculptured curved ceiling shape.

溝通重點 Communication Note

1. 空間配置需求以孩子為主體，基於家庭成員數量，對於收納的需求相對更高，希望保有享受生活的空間體驗，同時也希望解決孩子生活機能所需的收納規劃。2. 空間規劃需解決入室即見陽台門，穿堂煞的風水問題。3. 空間使用時間預計從女主人懷胎開始、到孩子出世，因應孩子的成長期不同階段的變化，需要不斷調整空間配置，在設計方面需留意保持使用彈性。

1. The priority for the space planning was mainly based on the children's needs, and the demand for storage was relatively high. How to uphold a spatial experience to enjoy daily life, and at the same time solve the functional requirements was the key to the design success. 2. Space planning needed to resolve Feng-Shui concerns. 3. The space was expected to cover pregnancy to childbirth, and also anticipate the changes in the child's different stages of growth. Therefore, the space configuration will need to be continuously adjusted, and maintain flexibility of use.

8. 造型特殊的餐桌與 Apparatus Studio cloud 吊燈造型相互呼應，通過環繞的座區界定餐廳場域。9. 輕食吧台區用燈光打亮大理石材，旁側玻璃拉門與黑色鐵件，描繪了細節的精緻性。10. 公領域和私領域之間的出入口採用拉門設計，門片收隱至牆內後，能因一致性的木地坪形成場域連接。11. 起居廳 / 遊戲廳採用和客廳一致的沙發造型，重視空間使用的自由度。

8. The special-shaped dining table echoes the shape of the Apparatus Studio cloud pendant that defines the dining space. 9. The illuminated marble countertop bar area and the adjacent black iron glass sliding depict the exquisite details. 10. The entrance and exit between the public and private areas are designed with sliding doors. The consistent wooden flooring hints at the connection between the areas. 11. The family room us focused on the flexibility of space use.



11



12

Thoughtful functional planning

Considering the different needs of the family's daily life, such as parent-child interaction and private gatherings, the living area design attached great importance to the feelings of openness and spaciousness. The B&B Camaleonda sofa is used in the living room. Its shape is like architectural geometric elements in balance with the arc vocabulary of the space.

The seating module without sharp angles ensures the safety of children's activities and can be moved freely when needed. This home has abundant storage space at various locations for different purposes, which helps maintain a comfortable and clean living environment.

In the public space an open plan design has glass sliding doors to partition off the open island counter area and the conventional kitchen setup to isolate cooking fumes, and to diffuse the sound of activities that might interfere with other areas.

The designer used a similar sliding door strategy to separate the public and private zones. In addition to the individual bedrooms, the private area also has great importance to the gathering of family emotions. The family room is the core of private gatherings, where parents and children can chat and read together, or couple's private niche.



15

12. 主臥室，溫潤雅致的配色。13.14. 主臥浴室，延續弧形元素。15. 小孩臥房，規劃造型床鋪。16. 小孩房設有衛浴空間，配合幼兒至學齡期的使用需求。
12. The master bedroom consists of a warm and elegant color scheme. 13.14. The master bathroom continues the curved elements in space. 15. View of the children's bedroom. 16. The children's room is equipped with a bathroom space, in consideration of the future needs of school age children.



13



14

Exquisite details that enlighten the space

The selection of materials throughout the project emphasizes texture and natural taste, using light colors as the background and wood grain to create a warm and bright sense of life, while also highlighting the changes in light and shadow in the interior. The designer used deep recessed window niches to bring in natural light and avoid the discomfort of direct sunlight. The public area walls are finished in a light-colored mineral paint which adjusts the indoor microclimate and light experience. The simple and generous space outline is combined with the texture contrasts and texture matching of wood grain and stone grain to give the home an intriguing and exquisite quality.

In response to the natural light advantage, the sliding doors in the public areas all have transparent patterned glass, allowing the panoramic floor-to-ceiling windows and balconies to continue their lighting advantages, while also maintaining privacy with moderate shielding effects. The vertical line detailing throughout the space echoes the texture of glass and curtains.

The cloud-like Apparatus Studio cloud pendent light emits childlike interest and freedom in the dining room. The island counter marble pattern and champagne gold-rimmed projection lights create a gorgeous decorative effect on the white-based background. It is a unique dining space during the day. At night, it transforms into a dazzling atmosphere under a light that can be used as a leisure space for the couple.



16